

# Leadership Planner



## Resources Needed

1. The link to the intro video with Gavin.
2. A copy of the warm-up questions and research document.
3. A link to the video on Pangea.
4. The local study task card and research questions.
5. A link to the closing video with Gavin.
6. A pencil, paper and some colours.

## Things to Teach

Watch the welcome introduction video with Gavin.

Introduce your partner to the keywords and help them define and spell the new words they don't know.

Read the warm-up questions with your partner and find the answers in the information booklet together.

Watch the video about Pangea and discuss how the Earth has changed over time

Complete your local geology study and talk about the different landforms that are in your area. Allow your partner to search and draw each landform.

*Tangerine*

'Leaders don't force people to follow—they invite them on a journey.'

# Leadership Planner

## Resources Needed

1. The link to the intro video with Gavin and Ben.
2. A copy of the warm-up questions and research document.
3. A globe or map.
4. A copy of the map document and some tracing paper.
5. A copy of your infographic and some questions to ask your buddy.
6. The infographic template.
7. A pencil, paper and some colours.

## Things to Teach

Watch the welcome introduction video with Ben and Gavin.

Introduce your partner to the keywords and help them define and spell the new words they don't know.

Read the warm-up questions with your partner and find the answers in the information booklet together.

Help your partner locate the North Pole on a map or a globe. Tell them about the Sami people.

Read the information about the Sami people from the infographic and help your buddy create their very own infographic on the indigenous people from your country .



**'Leaders don't force people to follow—they invite them on a journey.'**

# Leadership Planner



## Resources Needed

1. The link to the intro video with Gavin and Daniel.
2. A copy of the warm-up questions and research document.
3. The Ocean Current task card.
4. A copy of the 10 actions to stop climate change.
5. The video on how to make your very own weather station.
6. A pencil, paper and some colours.

## Things to Teach

Watch the introduction video with Daniel and Gavin and discuss.

Introduce your partner to the keywords for this course and help them define and spell the new words they don't know.

Read the warm-up questions with your partner and find the answers in the information booklet together.

Show your partner the Global Conveyor Belt diagram and tell them all about how it works.

Talk through the 10 actions to stop climate change and explain how these can be achieved. Print your buddy a copy of the 10 actions and ask them to try to achieve them over the coming weeks.

'Leaders don't force people to follow—they invite them on a journey.'

# Leadership Planner



## Resources Needed

1. The link to the intro video with Gavin and Daniel.
2. A copy of the warm-up questions and research document.
3. The Role of a Glacier task card.
4. Your completed version of the Glacier Task card.
5. A copy of the Glacier Research task card.
6. A copy of the 9 ways to save the world from your home task card!
7. A pencil, paper and some colours.

## Things to Teach

Watch the introduction video with Jocelyn and Gavin and discuss.

Introduce your partner to the keywords and help them define and spell the new words they don't know.

Read the warm-up questions with your partner and find the answers in the information booklet together.

Use your diagram of the role of a glacier to explain to your buddy how they work and the important things they do.

Help your partner find the nearest glacier by looking this up on a map alongside them. Once they have found their nearest glacier help them to answer the research questions. As you make your resource, you may wish to involve them in helping you create it and help you present at the end. .

**'Leaders don't force people to follow—they invite them on a journey.'**

# Leadership Planner



## Resources Needed

1. The link to the intro video with Gavin and Ulyana.
2. A copy of the warm-up questions and research document.
3. The importance of sea ice task card.
4. Reuse, recycle, and reduce task card.
5. A copy of your book drive poster to discuss with your buddy.
6. A pencil, paper and some colours.

## Things to Teach

Watch the introduction video with Ulyana and Gavin and discuss.

Introduce your partner to the keywords and help them define and spell the new words they don't know.

Read the warm-up questions with your partner and find the answers in the information booklet together.

Use the Sea Ice task card to talk about what happens if all the ice melts on earth. Talk about how our lives would change.

Work with your buddy to complete the reuse, recycle or reduce task card. Walk through each of the objects and discuss these with your buddy! Once complete, ask the child to decide which one they are going to focus on in their own home and ask them to set a target to discuss with you next week.

**'Leaders don't force people to follow—they invite them on a journey.'**

# Leadership Planner



## Resources Needed

1. The link to the intro video with Gavin and Danielle.
2. A copy of the warm-up questions and research document.
3. Your fact file research document.
4. A ruler, come card and colours.
5. Books to help them find crucial information.
6. An Ipad or a device to help them research.

## Things to Teach

Watch the introduction video with Danielle and Gavin and discuss.

Introduce your partner to the keywords and help them define and spell the new words they don't know.

Read the warm-up questions with your partner and find the answers in the information booklet together.

Read your very own fact file with your partner and talk about some of the research questions they could use to help them find information like this.

Ask your partner to choose an animal that they would like to research. Remember that the animal must live in your home country. Once the child has chosen, help them to research the facts on this creature. Set them up with a template that will allow them to make their very own fact file!

**'Leaders don't force people to follow—they invite them on a journey.'**

# Leadership Planner

## Resources Needed

1. The link to the intro video with Gavin and Jocelyn.
2. A copy of the warm-up questions and research document.
3. A device to watch the photosynthesis video.
4. The photosynthesis poster.
5. A copy of 'The World's Most Amazing Places'
6. Some card and paper to help them understand photosynthesis.



## Things to Teach

Watch the introduction video with Jocelyn and Gavin and discuss.

Introduce your partner to the keywords and help them define and spell the new words they don't know.

Read the warm-up questions on plants with your partner and find the answers in the information booklet together.

Watch the video on photosynthesis and use some cardboard and paper just like the video to explain to your buddy exactly how photosynthesis works.

'Leaders don't force people to follow—they invite them on a journey.'

# Leadership Planner



## Resources Needed

1. The link to the intro video with Gavin and Snowy.
2. A copy of the warm-up questions and research document.
3. A copy of the 'Bird Research' booklet.
4. Some books, magazines and technology to carry out research.
5. A copy of extension activity #2 on planting your own forest. Encourage them to try this task out.

## Things to Teach

Watch the introduction video with Snowy and Gavin and discuss.

Introduce your partner to the keywords and help them define and spell the new words they don't know.

Read the warm-up questions on birds with your partner and find the answers in the information booklet together.

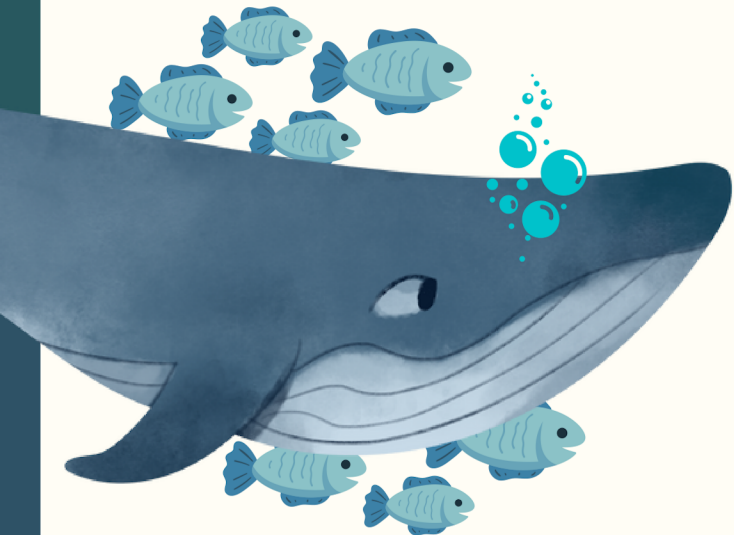
Help your partner to find a bird that lives in the local community and allow them to choose one that gets them excited.

Collect some books and use technology to help them complete the research booklet on their chosen bird. Work through each page of the research booklet with your partner until they have answered all the questions and drawn all of the diagrams.

'Leaders don't force people to follow—they invite them on a journey.'



# Leadership Planner



## Resources Needed

1. The link to the intro video with Gavin and Danielle.
2. A copy of the warm-up questions and research document.
3. A copy of the 'food web' task-card.
4. A magnifying glass and some note paper to help gather research on the producers in your playground.
5. A copy of the food web task card for the Arctic.

## Things to Teach

Watch the introduction video with Danielle and Gavin and discuss.

Introduce your partner to the keywords and help them define and spell the new words they don't know.

Read the warm-up questions on food webs with your partner and find the answers in the information booklet together.

Help your partner complete the food web activity and discuss the names of the animals involved and the scientific terms that are associated with them.

Take your partner into the playground and help them to find and identify two producers in the local area. These can be anything from trees to flowers. From there, it is time to find out which insects feed from these and then start to create their food web until you reach the apex predator.

'Leaders don't force people to follow—they invite them on a journey.'