

# The PHILIPPINES



# AGENDA



Basic Facts about  
the Philippines



Notable and  
Famous  
Landmarks in the  
Philippines



National Symbols  
of the Philippines

# YOUR TEACHERS



Juliana Silva



Korina Villanueva



Jamie Chastain



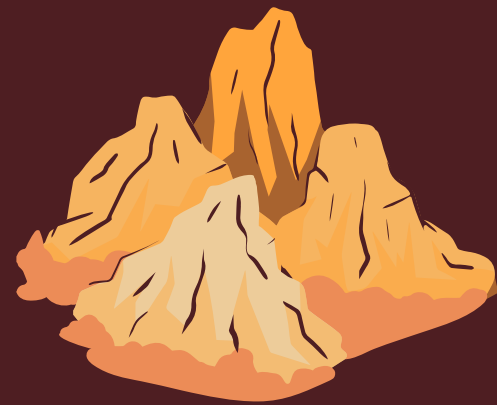
# Mabuhay!

Welcome to the Philippines

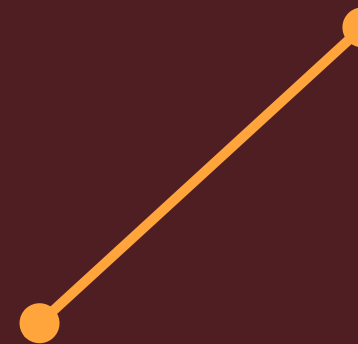
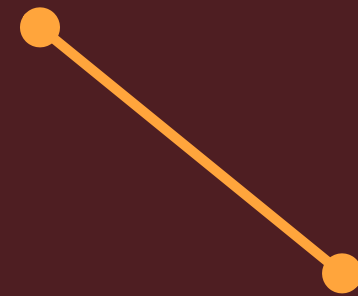


# BASIC FACTS

The Republic of the Philippines is a sovereign state in archipelagic Southeast Asia, with 7,641 islands



The Republic of the Philippines has more than 300,000 square kilometers of land.



The Republic of the Philippines is composed of Luzon, Visayas, and Mindanao island groups.



A Spanish explorer named the Philippines after a Spanish king during his 1542-1546 trip to the islands.

# HISTORICAL TIMELINE

**Before 1542**

This pre-colonial Philippines



**1542**

Spanish claim the islands

**1898**

Spain gives the Philippines to the US

**1941**

Japanese forces invade the islands

**1946**

The US grants the new Republic of the Philippines full independence

**2016**

The Philippines elected its 16th president



**Throughout its history, the Philippines has been subject to a number of foreign invasions. These invasions have shaped the Filipino people's history, culture, traditions, and beliefs.**





# landmarks

Welcome to the Philippines



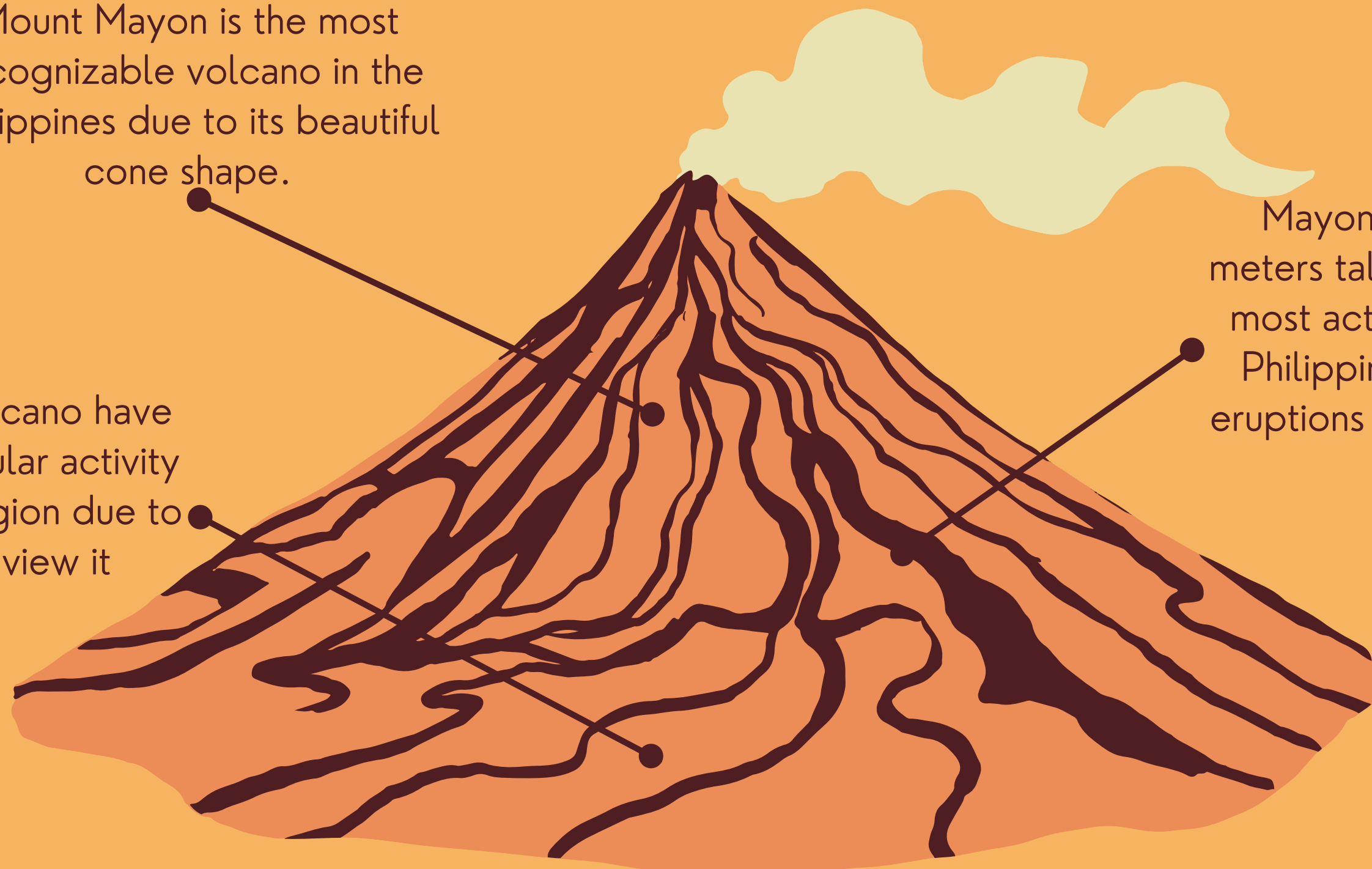


# Mt. Mayon

Mount Mayon is the most recognizable volcano in the Philippines due to its beautiful cone shape.

Tours of Mayon Volcano have been the most popular activity for visitors to the region due to the magnificent view it provides.

Mayon Volcano is 2,462 meters tall. It is also one of the most active volcanoes in the Philippines, with around 50 eruptions over the past several decades.

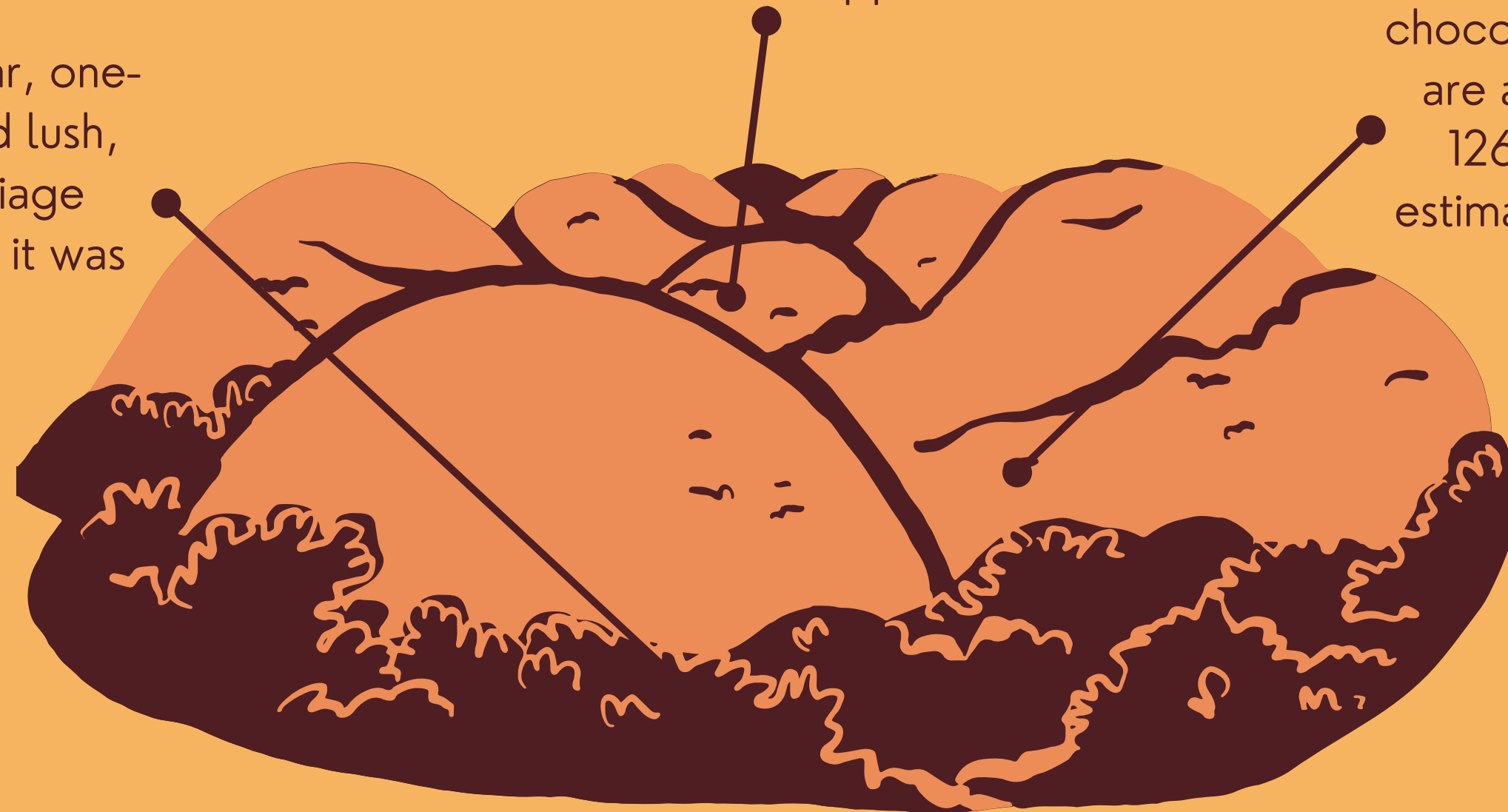


# Chocolate Hills

The Chocolate Hills are a collection of oddly shaped hills in the Philippines.

As a result of its peculiar, one-of-a-kind formation and lush, chocolate-brown foliage during the dry months, it was given its name.

It is unknown how many chocolate hills there are. There are a confirmed minimum of 1268 hills, however other estimates place this number as high as 1776.



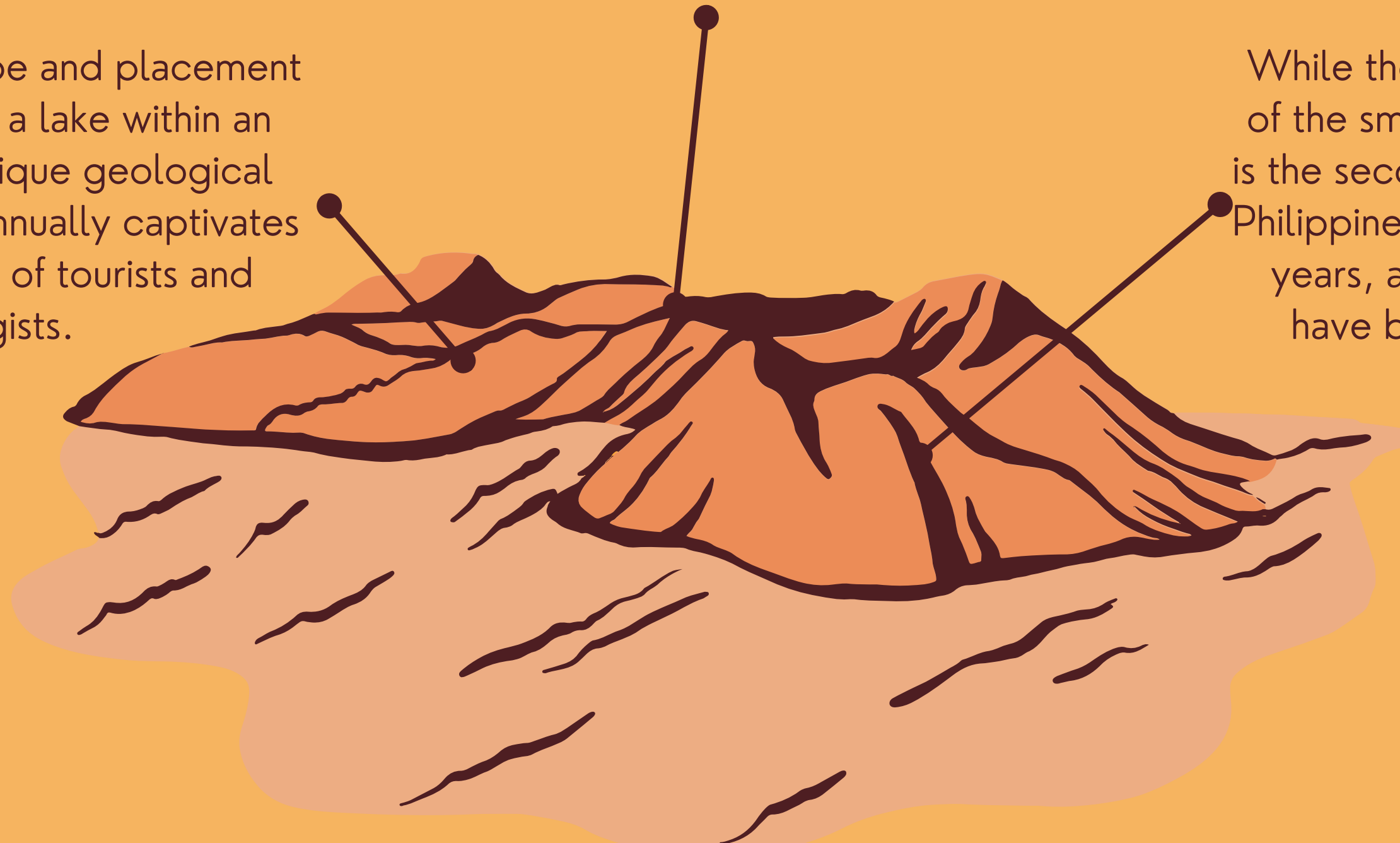
---

# Taal Volcano

The Taal Volcano is the world's smallest active volcano.

Its inexplicable shape and placement on an island within a lake within an island make it a unique geological phenomenon that annually captivates tens of thousands of tourists and geologists.

While the Taal volcano is one of the smallest in the world, it is the second most active in the Philippines. In the previous 450 years, at least 34 eruptions have been documented.





# National Symbols

**Welcome to the Philippines**



---

## National Flower



### Sampaguita

Its white flower is believed to symbolize purity, fidelity, and hope.

## National Tree



### Narra

It is tall, sturdy, and enduring, symbolizing the perseverance of the Filipinos in their quest for independence.

## National Bird



### Philippine Eagle

The Philippine Eagle represents the bravery and power of the Filipino people.

---

## National Fruit



### Mango

The heart-shaped mango represents the "golden heart" of every Filipino, which means that we all tend to be kind.

## National Animal



### Carabao

It represents strength, power, efficiency, tenacity, and most importantly, hardwork.

## National Leaf



### Anahaw

Anahaw leaves are a common emblem that is frequently included in medals and trophies to represent outstanding achievement, strength, and loyalty.

---

## National House



### Nipa Hut

A symbol of Philippine culture because it represents the most cherished Filipino ideal, Bayanihan, which is the spirit of collective oneness.

## National Gem



### Philippine Pearl

It is a representation of the Philippines' artistic prowess and natural splendor.



# Salamat!

Thank you for listening

