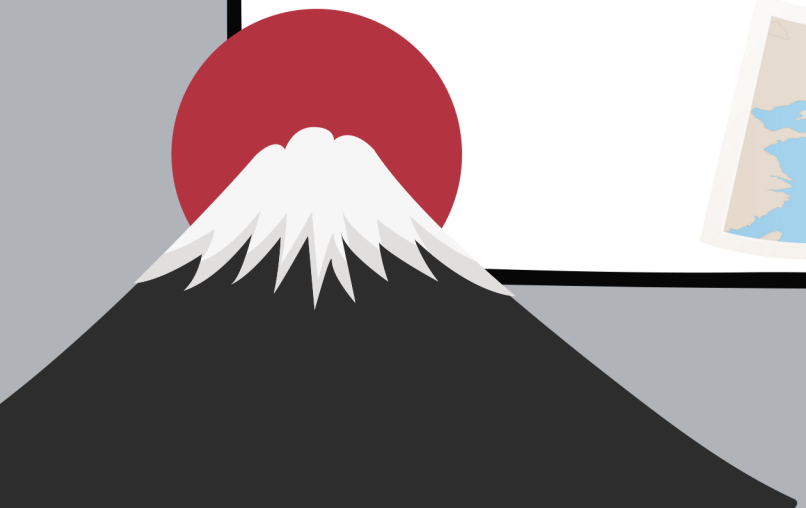
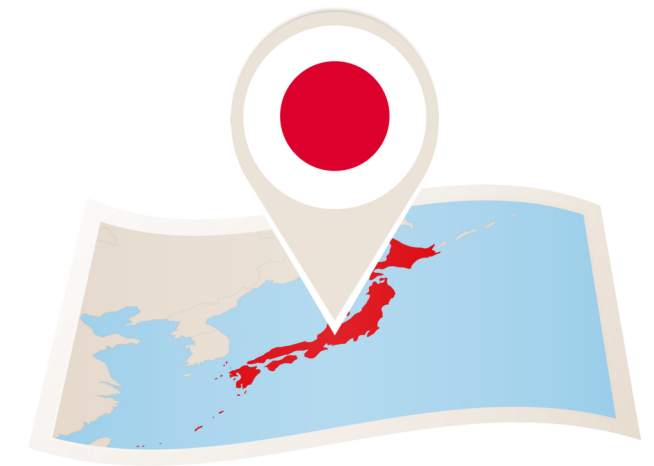
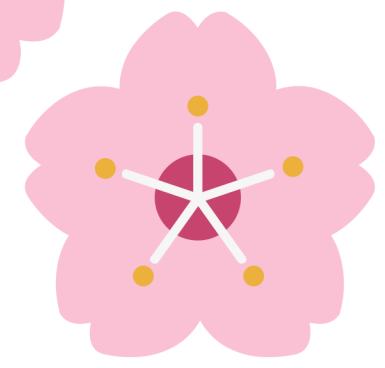
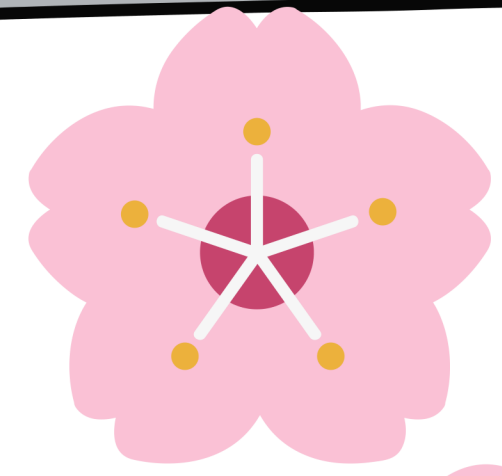
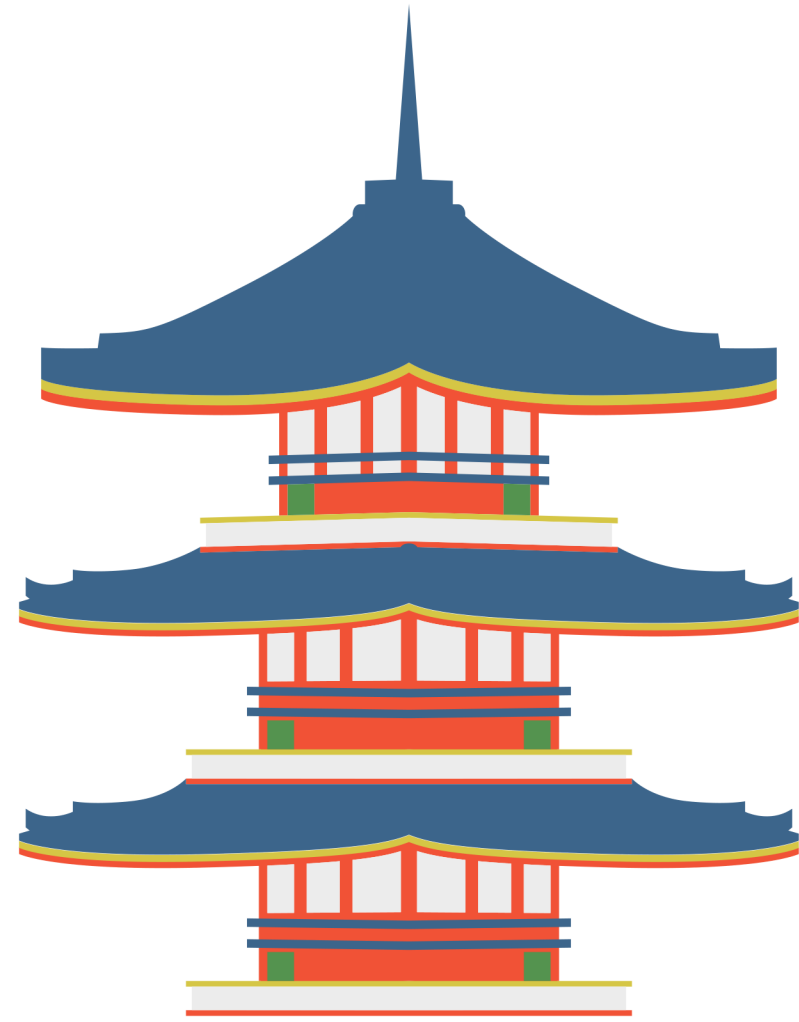


CULTURE REPORT

ALL ABOUT

JAPAN



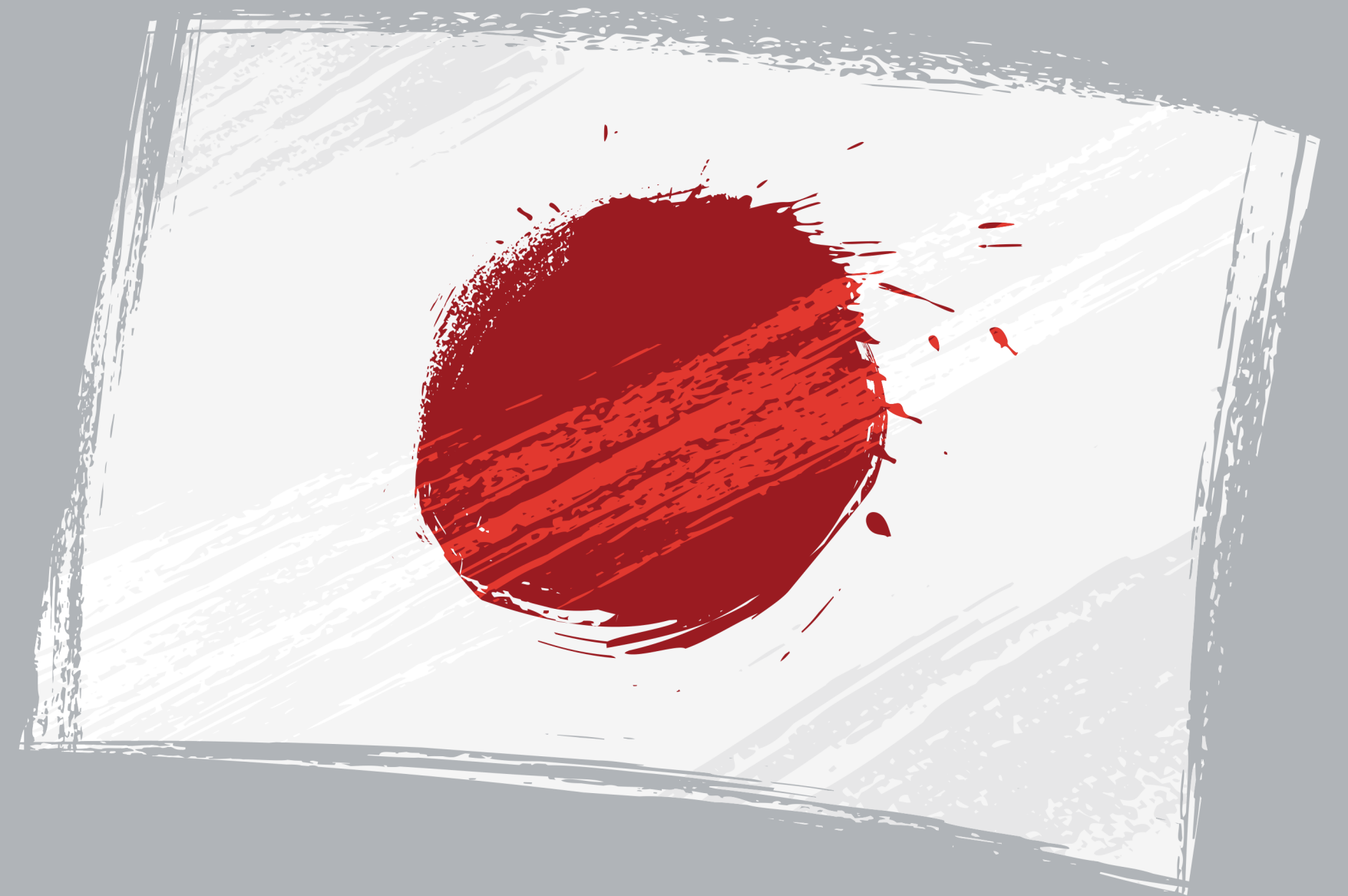


History

From the 17th to 19th Century, Japan held policies that kept the country isolated from the rest of the world. After World War II, Japan evolved into the modern industrialized nation it is today.

Flag

The flag is known as the hinomaru in Japanese, meaning "circle of the sun. It was adopted by the country in 1854 when the country began to create relationships with European nations.



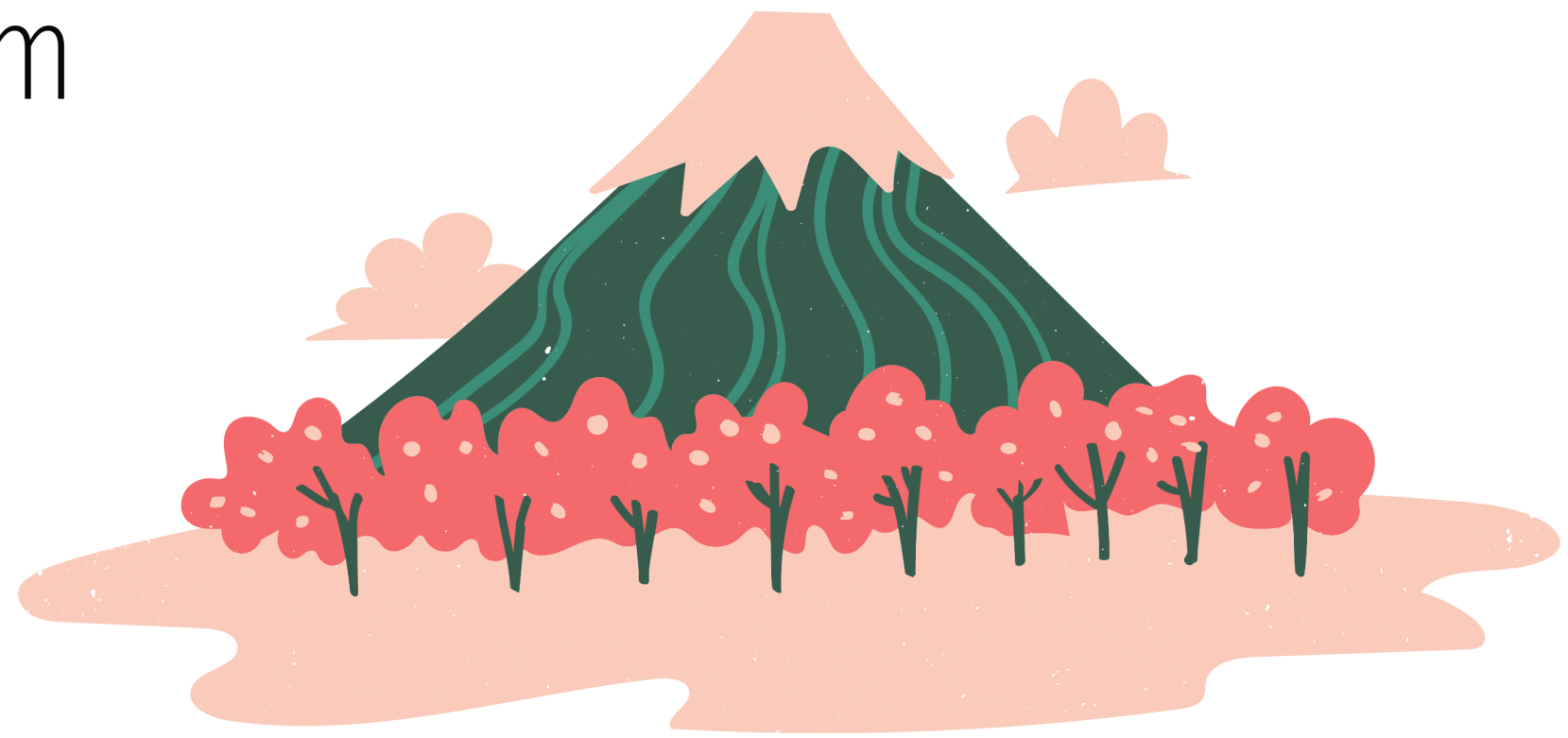
Language

Japanese is a unique language that uses three types of letters: Hiragana, Katakana, and Kanji. It also includes special polite forms to show respect, called honorifics.



Climate

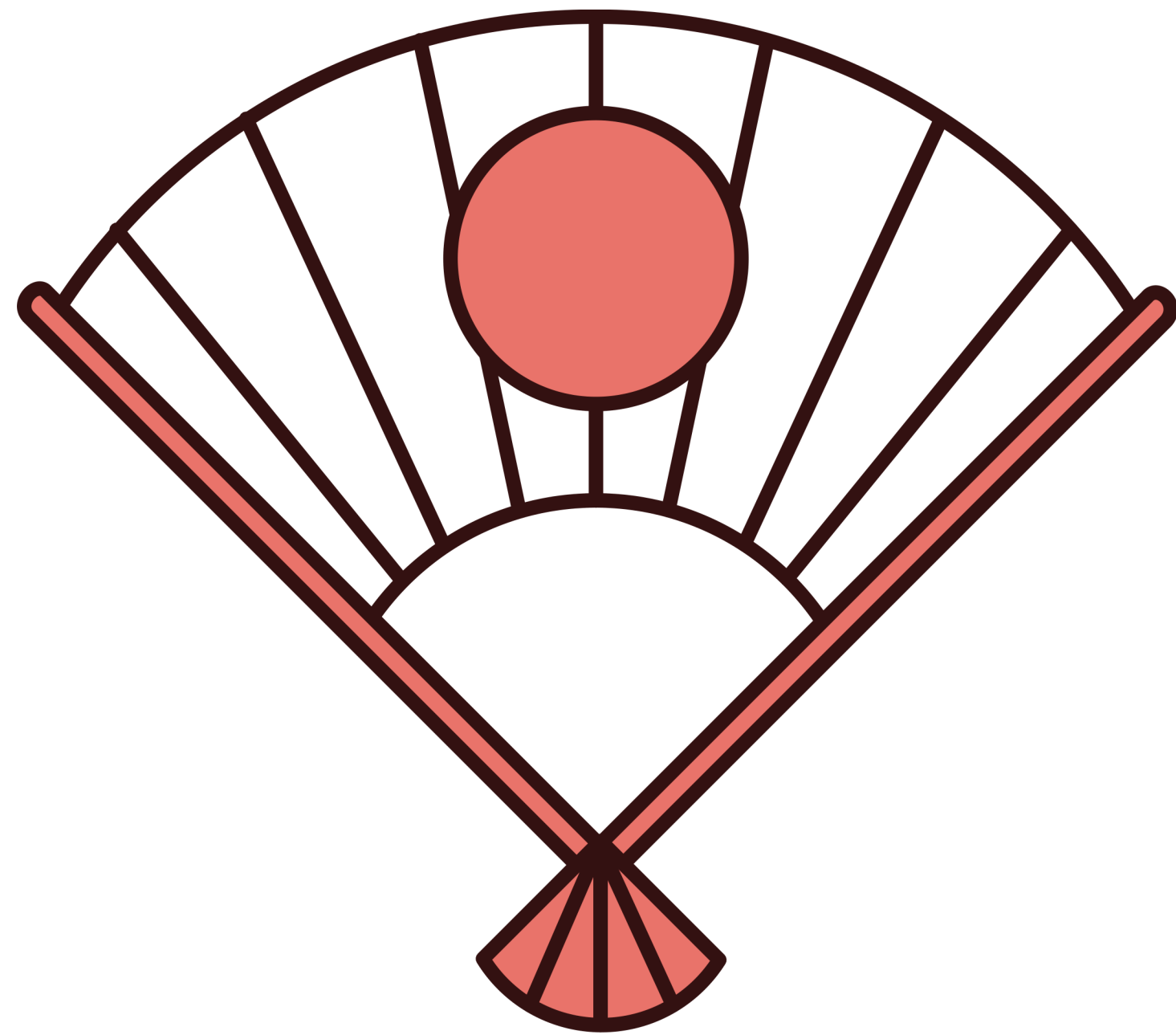
The climate ranges from humid continental to humid subtropical on differing Islands



Food

Japanese food, known as washoku, is diverse and healthy, famous for sushi, ramen, and tempura. It emphasizes balance, seasonal ingredients, and presentation, making each meal an artistic experience.



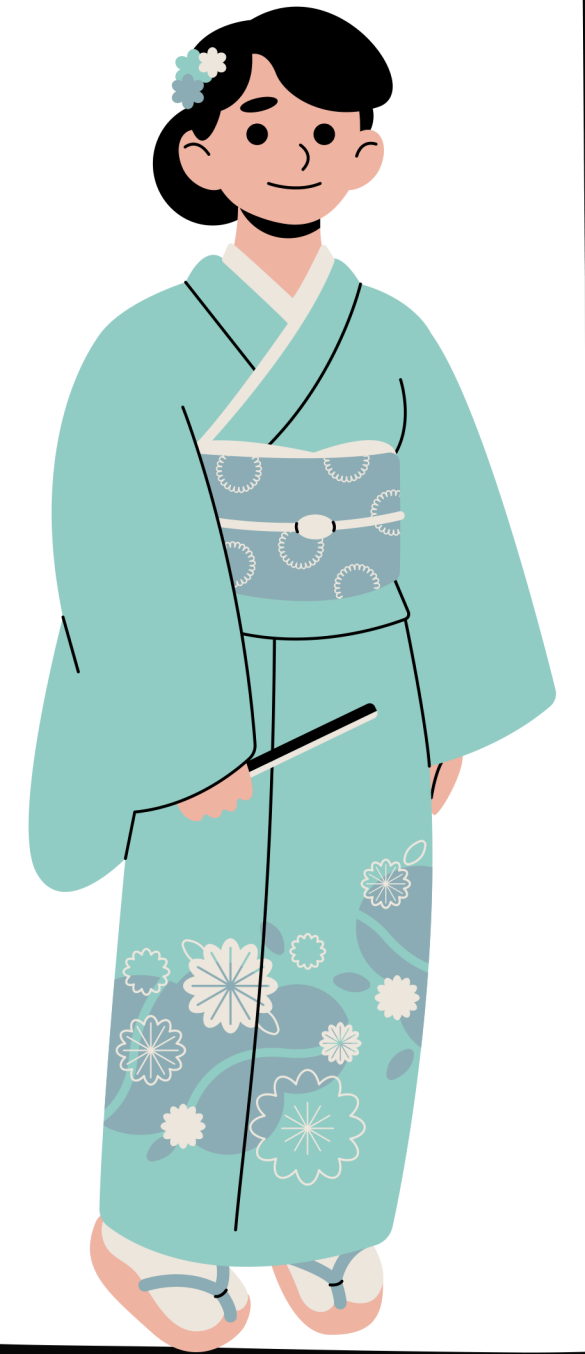
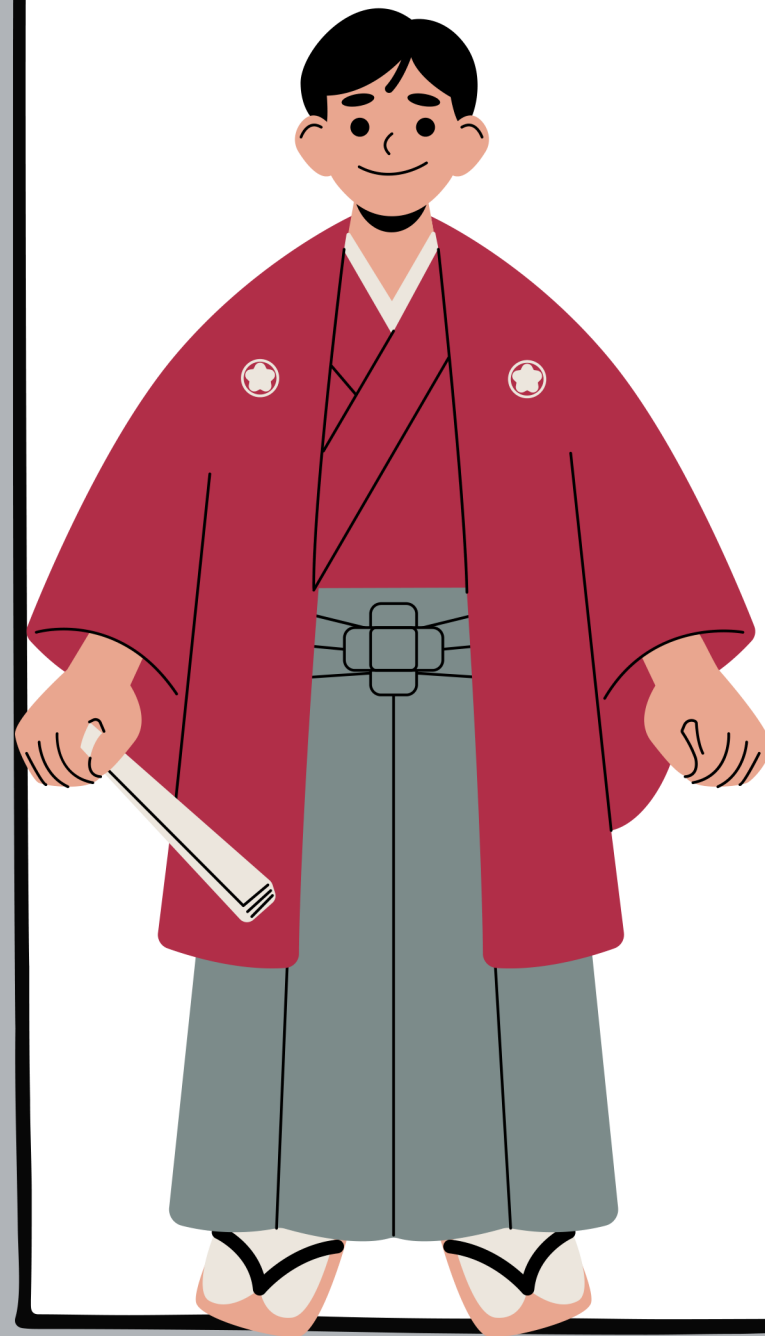


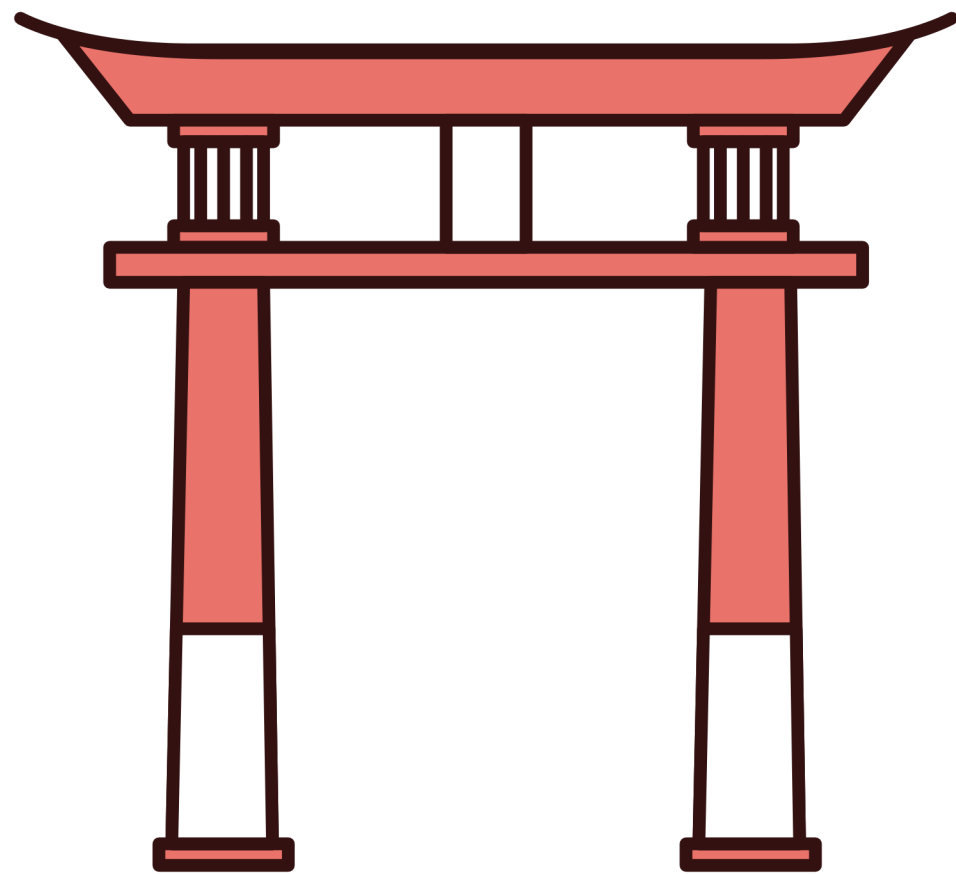
Economy

Japan has the third largest economy. It grew quickly in the 2nd half of the 20th Century.

People

Japan's population is 98% ethnically Japanese. Their culture stresses harmony and social conformity.





Religion

The two major religions in Japan are Shinto and Buddhism. They co-exist relatively well.

Landmarks

- Shibuya Crossing
- Arashiyama Bamboo Grove
- Itsukushima Shrine
- Himeji Castle
- Mount Fuji
- Tokyo Tower

