

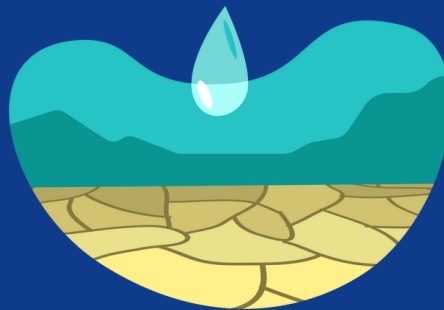
WHAT TWO DEGREES TEMPERATURE RISE MEANS TO OUR EARTH!



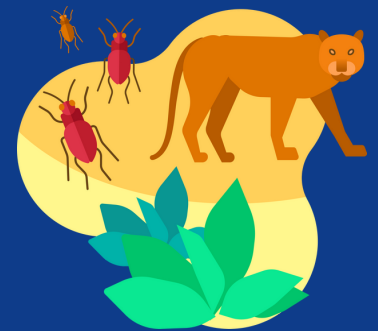
Since the last century, the Earth has already experienced an exponential rise in temperature by 1°C . If the increase continues and reaches 2°C in the future, the world may look very different.



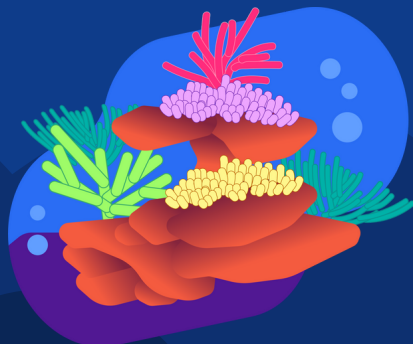
Once every five years, 37% of the world population is exposed to extreme heatwaves. This number will increase



More than 400 million people worldwide will be forced to live without enough water.



The Earth may lose 18% of insects, 16% of plants, 8% of vertebrates.



The coral reefs around the world decline up to 99%. There will only be 1% left and then where will the fish live?



Sea levels may rise by up to 46 cm and impact 30 to 80 million people.