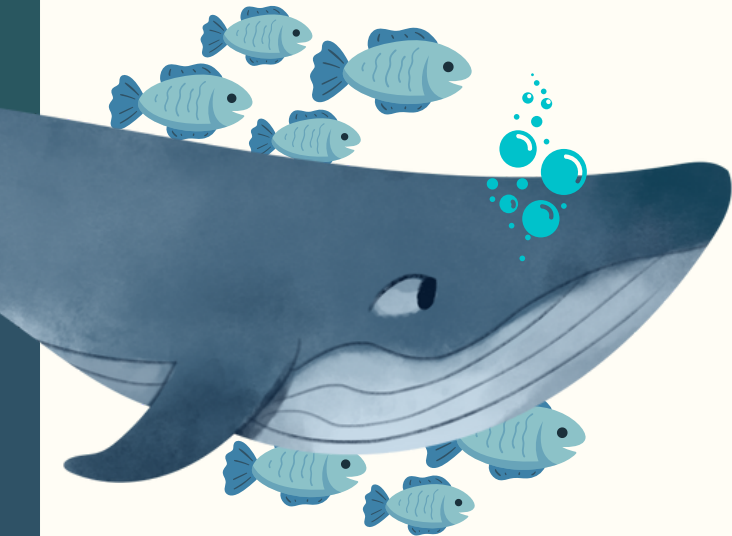


# Weekly Leadership Planner



## Week 9

### Resources Needed

1. The link to the intro video with Gavin and Danielle.
2. A copy of the warm-up questions and research document.
3. A copy of the 'food web' task-card.
4. A magnifying glass and some note paper to help gather research on the producers in your playground.
5. A copy of the food web task card for the Arctic.

### Things to Teach

Watch the introduction video with Danielle and Gavin and discuss.

Introduce your partner to the keywords for this week and help them define and spell the new words they don't know.

Read the weekly warm-up questions on food webs with your partner and find the answers in the information booklet together.

Help your partner complete the food web activity and discuss the names of the animals involved and the scientific terms that are associated with them.

Take your partner into the playground and help them to find and identify two producers in the local area. These can be anything from trees to flowers. From there, it is time to find out which insects feed from these and then start to create their food web until you reach the apex predator.

**'Leaders don't force people to follow—they invite them on a journey.'**