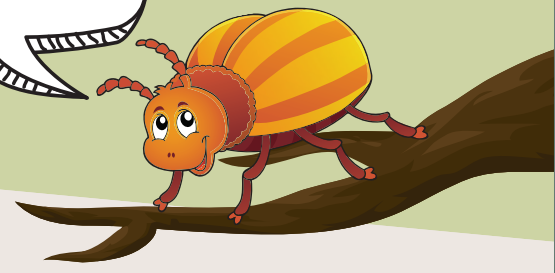


HOW TO PLANT A SEED AND ATTRACT A NEW INSECT INTO YOUR SCHOOL COMMUNITY.

'I love my new home.'



1. Find a Plant Pot

Your first job is to find a plant pot where you will grow your sapling. You may want to use an old take-away coffee cup and promote recycling or create your own pots from clay.



2. Collect Your Soil

Once you have found a pot, your job is to collect some fertile soil to grow your sapling. Remember darker soil is usually more fertile. Once you have collected the soil, place it inside the pot



3. Source Your Seeds

Find seeds that attract the insect of your choice, and then it is time to plant your seed and place it in the right environment to encourage it to grow. Make sure you water it regularly and give it plenty of sunlight!



4. Organise a Planting Session

When your plants have grown and are ready to be transferred to the ground, organise the space where the saplings will go and plant them carefully. Make sure you get some photos of the event. .



5. Watch your Habitat Thrive

Once your saplings are happy in their new home, water them regularly and keep an eye out for the insect you wanted to attract. Then sit back and watch nature take care of the rest! You just created a new habitat!!



Your task has been successful when the insect you're looking for arrives in your new habitat.

Keep your eyes peeled

