

# GLACIAL ICE

## Step 1 - Find your nearest glacier



Step 2 - Here are some of the questions you may wish to research when trying to understand your nearest glacier.

- Where is the Glacier located?
- What is the name of the glacier?
- What kind of glacier is it?
- Do any people rely on the glacier?
- Is the glacier retreating/advancing?
- Do any animals rely on it?
- What will happen if the glacier melts?



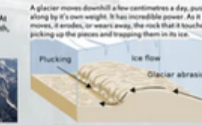
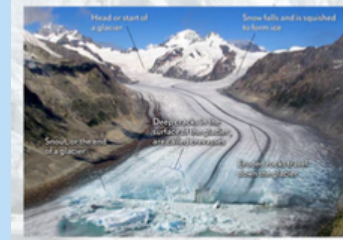
Step 4- Use your creation to teach a younger child or class about the importance of glaciers and the ways we can protect them.



## Information Report

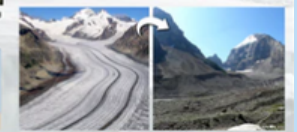
### Glaciers

Glaciers are giant rivers of ice that form over years, often centuries of snow fall on high ground. They slowly move downhill, wearing away the ground and rocks as they move. When the climate becomes hot it warms up the snout (end of a glacier flow) and begins to melt. As it melts it drops all the warm-away rocks it was carrying.



### Shaping the land

A glacier's weight, combined with its gradual movement, can drastically reshape the landscape over hundreds or even thousands of years. The ice erodes the land surface and carries the broken rocks and soil debris far from their original places.



## Diorama



Step 3 - Design a way to represent your research. Remember you will use this to teach younger children about glaciers (ideas above)